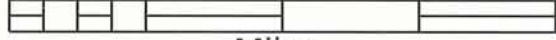


<b>A</b>		Lock 20	13, 14	Sycamore Island (WSSC)	09
Aqueduct Dam	13	Lock 22 (Pennyfield Lock)	07, 08	Stubblefield Falls	18
American Legion Memorial Bridge	19	Lock 18	13, 14	Snake Island	23, 24
Anglers Boat Ramp	15, 16	Lock 17	13, 14	Spitzbergen Rock	14, 15
Arizona Ave Trestle	26	Lock 16	14, 15	Sherwyn Island	15, 16
<b>B</b>		Lock 15	14, 15	Sharpshin Island	02
Bird Sanctuary	06, 07	Lock 13	19	Seneca Boat Ramp	04
Brookmont Dam	23, 24	Lock 11	20	Scotts Run Nature Preserve	18
Blockhouse Point Conservation Park	06	Lock 10	20	Sandy Landing	14
Block House Point	05, 06	Lock 10 Boat Ramp	20	Spout Run Parkway	27
Billy Goat Trail Head	14, 15, 16	Last Point	13, 14	S Turn	14
Bear Island	14, 15	Langley Island	21	Sandy Beach	14
Bealls Island	12	Lock 21 (Swain's Lock)	11	<b>T</b>	
Boat Launch (Proposed Ramp at Little Falls)	23, 24	Lock 14	19	Tenfoot Island	01
<b>C</b>		Lock 6 (Pedestrian Bridge)	24	<b>Trails</b>	
Carderock Recreation Area	17, 18	Lock 19	13, 14	<i>Anglers Spur (.54 Mi)</i>	15, 16
Chain Bridge	25	Lock 24 (Riley's Lock)	04	<i>Berma Road (1.4 Mi)</i>	14-16
Cupids Bower	15, 16	Lock 7	22, 23	<i>Billy Goat Sect. A</i>	14-16
Conn Island	13	Lock 8	20, 21	<i>Billy Goat Sect. B (1.4 Mi)</i>	16, 17
Climbing Area	17, 18	Lock 9	20	<i>Billy Goat Sect. C (1.6 Mi)</i>	17-19
Claggett Island	08, 09	Lowes Island	04	<i>Blue Blaze</i>	14, 15
Chataqua Island	22, 23	Little Falls Dam	23, 24	<i>Boardwalk At Great Falls</i>	29
Charles Hole	13, 14	Lock 5 (Vehicle Access)	24	<i>C&amp;O Canal Towpath</i>	01-29
Catfish Hole	14	Lock 23 (Violet's Lock)	04, 05	<i>Carriage</i>	14
Center Chute	15	<b>M</b>		<i>Dead Run Trail</i>	20, 21
Canal Cut (GW Canal)	14	Minnie Island	21	<i>Difficult Run</i>	15
Calico Rapids	17	Maryland	24, 25	<i>Falls Rd Spur (.11 Mi)</i>	15
Cabin John Island	22	Maryland Put In	14	<i>Ford Mine Trail</i>	12, 13
<b>D - E</b>		Maryland Chute	15, 16	<i>Gold Mine Loop</i>	13-16
Diersson Wildlife Management Area	06	Mary's Wall	14	<i>Little Pimmet Run Trail</i>	24, 25
Echo Cliff (Cow Hoof Rock)	15	Madeira School	15, 16	<i>Lock 16 (.32 Mi)</i>	14, 15
Elm Island	06	Marsden Tract	16, 17	<i>Lock 19 Loop (.48 Mi)</i>	13, 14
<b>F</b>		<b>N - O</b>		<i>Lock 5 Over Parkway (.1 Mi)</i>	24
Fletcher's Boat Ramp	26	Observation Deck	13, 14	<i>Mount Vernon Trail</i>	29
Foot Bridge	04, 13-15, 19-23, 28, 29	O Deck	13, 14	<i>Olmsted Islands Trail</i>	13, 14, 15
Fletcher's Boat House	26	Olmstead Island	13, 14	<i>Overlook Trail (.46 Mi)</i>	24, 25
Foot Bridge across Canal	16, 17, 20, 21	O Deck Rapid	13, 14	<i>Pimmet To Ft. Marcy</i>	24, 25
Flake Island	13, 14	Offutt Island	16	<i>Potomac Heritage National Scenic Trail</i>	19 - 29
Fisherman's Eddy	14	<b>P</b>		<i>Quarry</i>	14
Fish Ladder	13, 14	Prospect Rock	16	<i>River Trail (1.0 Mi)</i>	12, 13
Falls	17	Pipeline-R.O.W	10	<i>Rockwood Spur (.23 Mi)</i>	15, 16
Falls Island	13, 14	Purple Horse Beach	15	<i>Ridge Trail</i>	14, 15
Flood Gate	14, 15	Proposed New Boat Ramp (Seneca)	04	<i>Social Trail (.46 Mi)</i>	13, 14, 15
<b>G</b>		Proposed Boat Access	13	<i>Swamp Trail</i>	14
Great Falls Park	14	Plummer Island	19, 20	<i>Theodore Roosevelt Island Trail</i>	29
Grapevine Island	06	Perry Island	16, 17	<i>Trail From Towpath</i>	18
Glays Island	11	Pennyfield Boat Ramp	07	<i>Turkey Run Area A</i>	22
Great Falls Dam	13	Patowmack Island	05, 06	<i>Turkey Run Area C</i>	21, 22
George Washington Canal	04	Possible Boat Ramp	06, 11	<i>Turkey Run Loop Trail</i>	21
Glen Echo Park	22	<b>R</b>		<i>Turkey Run Loop To Potomac</i>	21
<b>H</b>		Ruppert Island	22, 23	<i>Turkey Run Area B</i>	21, 22
Hermit Island	16, 17	Rocky Islands	14	<i>Turkey Run Woods Trail</i>	21, 22
Herzog Island	17	Riverbend Park	12	<i>Valley Trail (.63 Mi)</i>	15, 16
Horseshoe Falls	13, 14	Ring Down Phone (CCT Mile 9)	27	<i>Woodland Trail (.7 Mi)</i>	15, 16
High Island	24	Ring Down Phone (CCT Mile 10)	28	Turkey Run Park	21, 22
<b>J - K</b>		Ring Down Phone (Glenn Echo)	22	Turkey Island	17
Judy's Hole	14	<b>S</b>		The Traverse	14, 15
Key Bridge	28, 29	Seneca Breaks	04, 05	Theodore Roosevelt Island	29
Katie Island	07	Sugarland Run	02	<b>V</b>	
Kayak Channel	23, 24	Swain's Lock Boat Launch	11	Vehicle Access	04, 05, 07, 08, 11
<b>L</b>		Swainson Island	20	Virginia Water Intake	04
Lock 12	19, 20	Sycamore Island (Glen Echo)	23	Virginia Boat Ramp	14
				Vehicle Bridge	13, 14, 20
				Vaso Island	17
				Virginia Chute	15
				<b>W</b>	
				Washington, DC	24, 25
				Watkins Island	07, 08, 09, 10
				WSSC Dam	10
				Widewater Area	15
				<b>Y - Z</b>	
				Yellow Falls	17
				Z Turns	13, 14
				Z Channel	23, 24

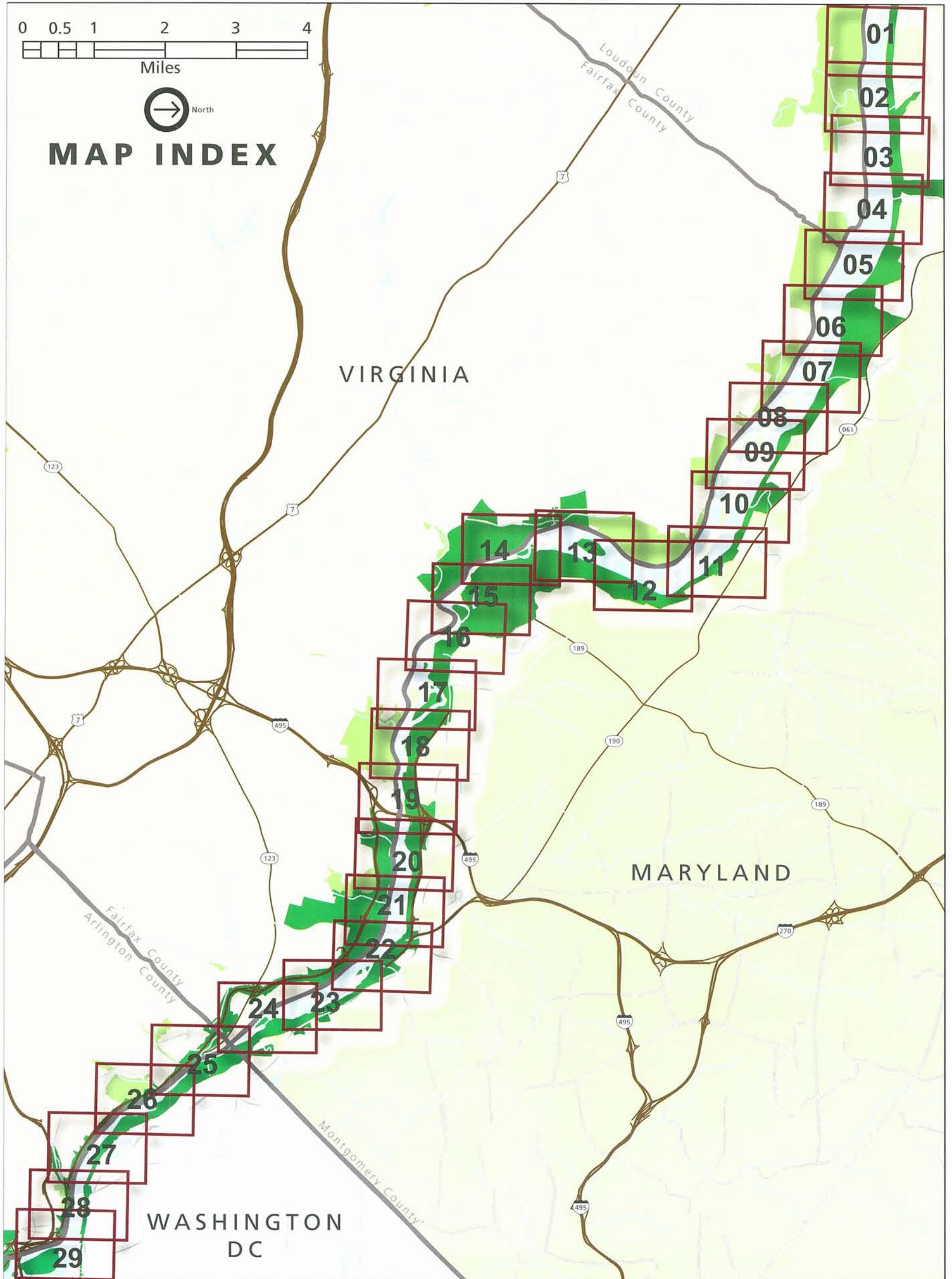
0 0.5 1 2 3 4



Miles



# MAP INDEX



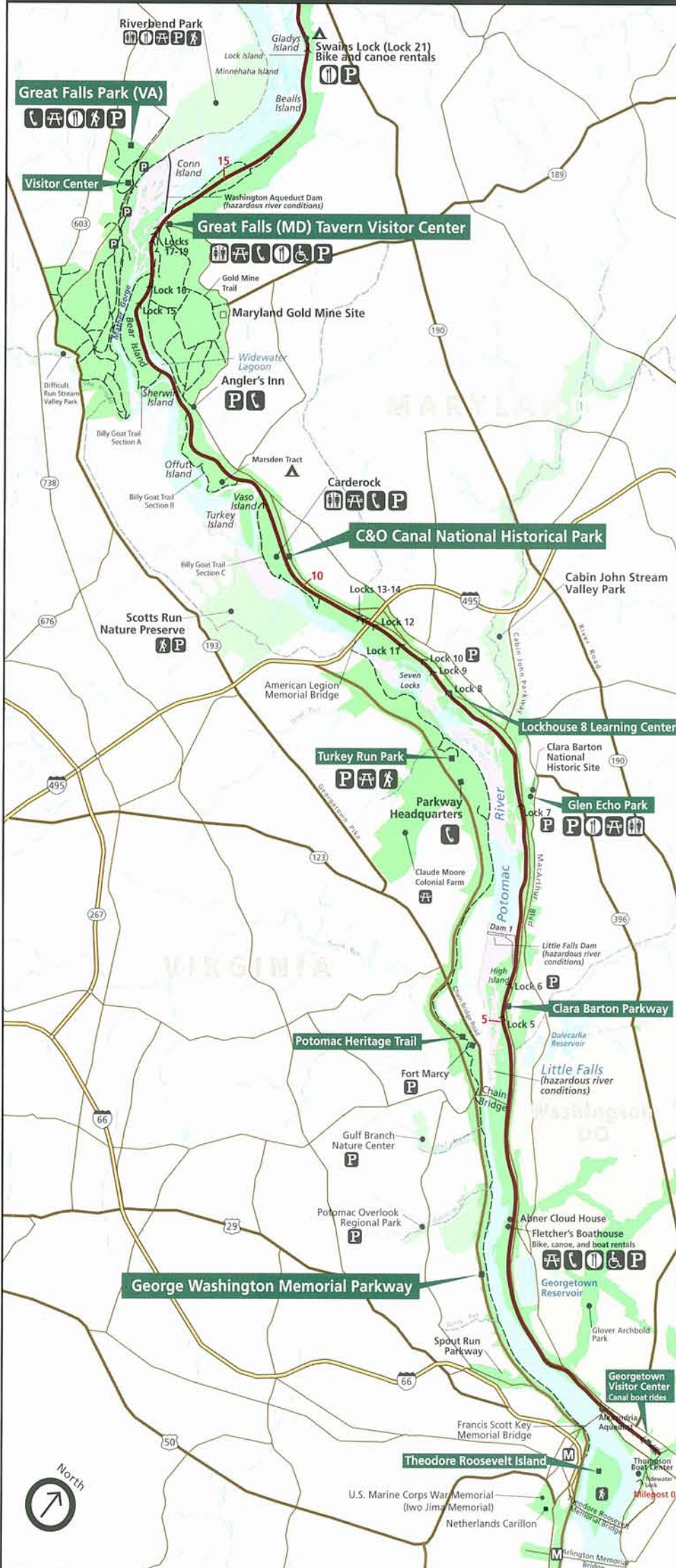
VIRGINIA

MARYLAND

WASHINGTON  
DC



# Detail Map of the Potomac River Gorge

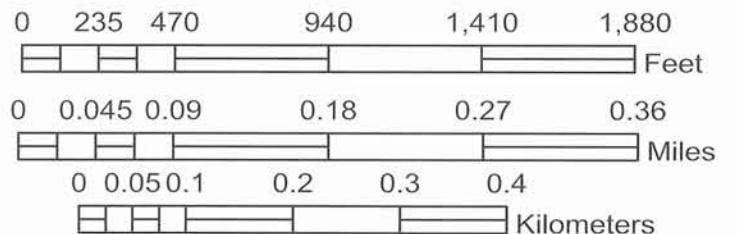


## Map Legend

- Campground
- Parking area
- Picnic area
- Milepost
- Area of Interest
- Hydrology
- Trails
- C&O Canal Towpath
- Climbing Areas

## Scale

1 inch equals 500 feet



BLUE NUMBER AND BLUE TICKS OUTSIDE THE NEATLINE AND THE WHITE CROSSES INSIDE THE NEATLINE, INDICATE THE 5,000 FOOT GRID BASED ON THE MARYLAND COORDINATE SYSTEM. THE HORIZONTAL DATUM REFERENCED IN THIS MAP BOOK IS BASED ON THE NORTH AMERICAN DATUM OF 1983 (NAD83).

- Canal and towpath trail
- Other trail
- Local Parks
- Restrooms
- Wheelchair accessible
- Picnic area
- Rapid and hazardous areas
- NPS Parks
- Parking
- Telephone
- Snack bar
- Hiker-biker campsite